

Patient Slings



SLING MATERIALS





 PATIENT SPECIFIC

Popular

Page 3



 HYBRID

Popular

Page 4



 EASY APPLICATOR

Page 5



 SUBMARINER

Popular

Page 6



 FORTREND

Page 7



 HIGH IMPACT

Page 8



 ENRICHED COTTON

Page 9



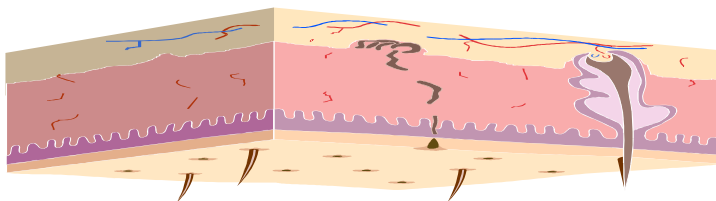


PATIENT SPECIFIC

SINGLE PATIENT USE (SPU)

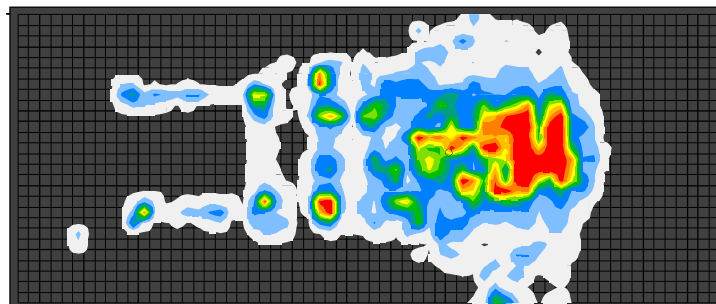


Composition
Polyester, Viscose, Nylon



Patient Specific (SPU)

Air Permeable



Surface Neutral

The SPU Material offers exceptional product attributes including:

- Distribution and dispersion of the patient's weight over the entire sling.
- Is non reactive with commonly used medications, creams and lotions.
- Is capable of being stored for an extended period of time - including under direct sunlight - without harmful effects
- Exceptional Wet Load Bearing Strength - can be used in Hydrotherapy, in Pools, for Bathing and Showers



Soft, Comfortable



Can be "Spot Cleaned"
Spray Disinfected



Rip-Stop Mesh for
additional security



Compatible for use with
X-Ray and MRI Imaging



Surface Neutral



Exceptional "Wet" Load
Bearing Strength



SWL - 200 Kg
SWL - 500 Kg (XL)



Can be used in
Pools, Bathing, Showers



Minimal Stretch under
Load Weight and Pressure



P	S	M	L	X	L	XXL
200 Kg	440 Lbs	500 Kg	1110 Lbs			
Safe Working Load (S W L)						

Fullback
Lowback - Standard
Sit 2 Stand
Repositioning
Turning
Limb Support



Rhino Consultant and Facilitators Ltd
10 Gregston Trade Centre
Birmingham Road
Oldbury - B69 4EX UK



www.rhino-slings.com



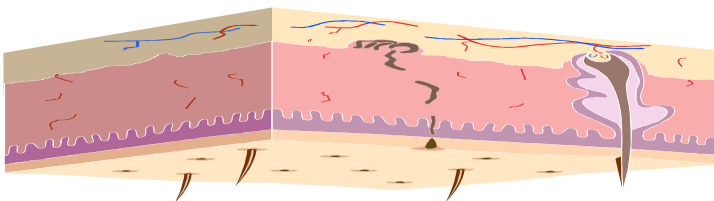
HYBRID

Hybrid

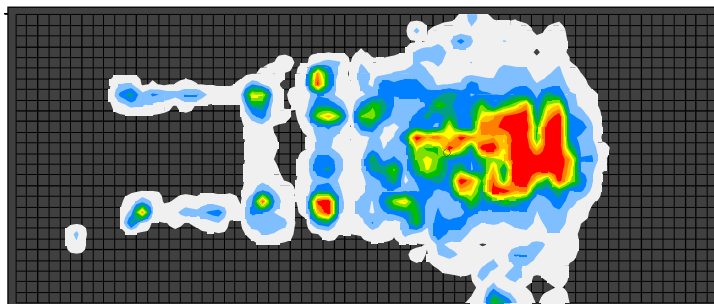


Composition

Blend of Polyester Fibres and Yarn



Patient Specific (SPU)



Surface Neutral

The Hybrid Material is a popular sling fabric.

- Distribution and dispersion of the patient's weight over the entire sling.
- Is non reactive with commonly used medications, creams and lotions.
- Knitted construction provides for a soft, conformable fabric structure
- Economically priced.



PSM	LXL	XXL
200 Kg	500 Kg	✓
440 Lbs	1110 Lbs	

Safe Working Load (S W L)

Fullback
Lowback - Standard
Toileting
Walking
Sit 2 Stand
Hammock
Repositioning
Turning
Limb Support



Rhino Consultant and Facilitators Ltd
10 Gregston Trade Centre
Birmingham Road
Oldbury - B69 4EX UK



www.rhino-slings.com



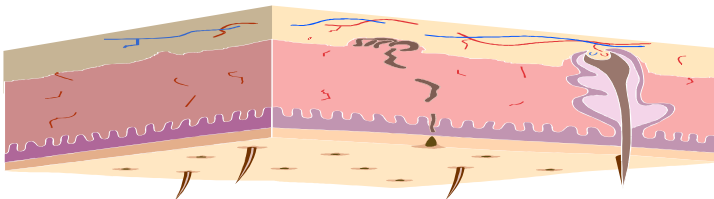
EASY APPLICATOR

Easy Applicator



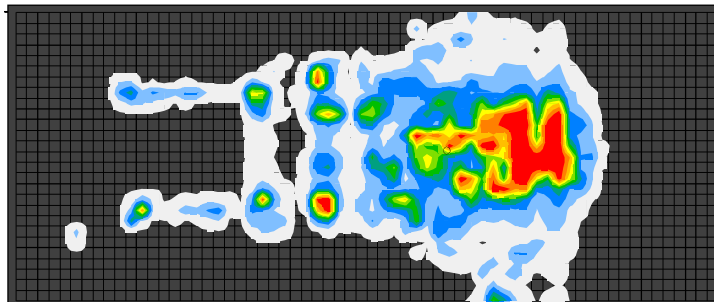
Composition

Blend of Nylon Fibres and Yarn



Patient Specific (SPU)

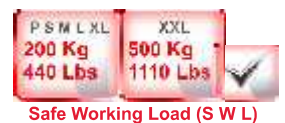
Air Permeable



Surface Neutral

The Easy Applicator Material is a versatile, unique fabric that offers exceptional product attributes including:

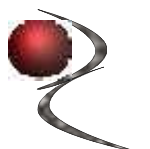
- Rapid Drying - Hang-To-Dry in 30 Minutes – Increases longevity of the Sling and reduces risks of damage to Sling Material in a dryer.
- A Sling that is easy to apply and remove thus minimising the potential of skin trauma on application and removal.
- Very good material for use in the manufacture of Amputee Slings



Fullback
Lowback - Standard
Toileting
Walking
Sit 2 Stand
Hammock
Repositioning
Turning
Limb Support



Rhino Consultant and Facilitators Ltd
10 Gregston Trade Centre
Birmingham Road
Oldbury - B69 4EX UK



www.rhino-slings.com



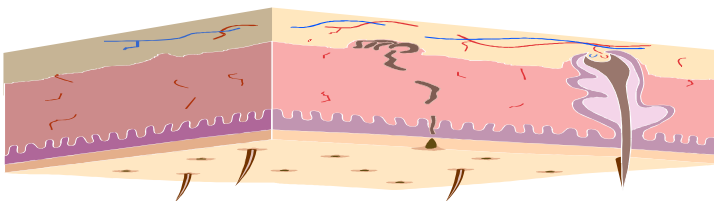
SUBMARINER

Submariner (Mesh)

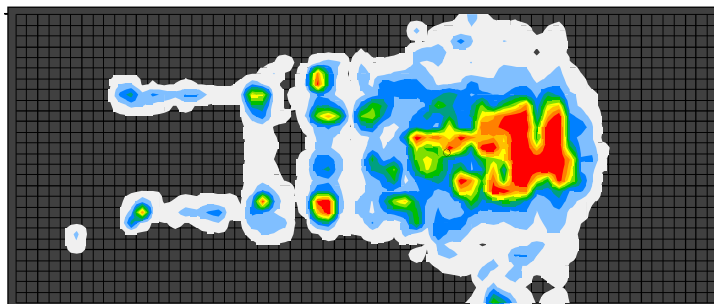


Composition

Blend of Polyester Fibres and Yarn



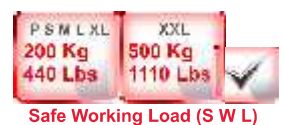
Patient Specific (SPU)



Surface Neutral

The Submariner Material is a popular sling material.

- Unlike other Mesh Slings, Submariner Sling Material does not mark the patient's skin
- Mesh Knitted Fabric with softer harmonised mesh aperture
- Quicker drying because of the mesh construction
- Designed with bathing / showering in mind
- Also ideal for use in swimming and hydrotherapy pools



Fullback
Lowback - Standard
Hammock
Repositioning
Turning
Limb Support



Rhino Consultant and Facilitators Ltd
 10 Gregston Trade Centre
 Birmingham Road
 Oldbury - B69 4EX UK



www.rhino-slings.com



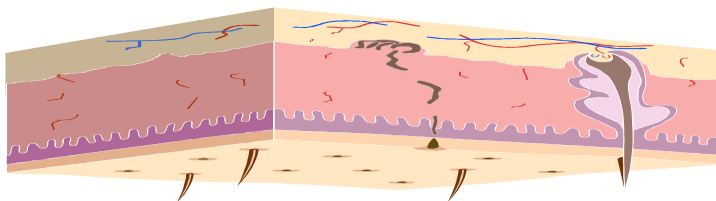
FORTREND

Fortrend

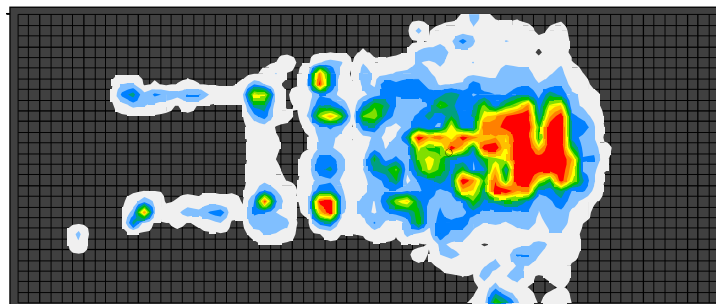


Composition

Blend of Nylon Fibres and Yarn



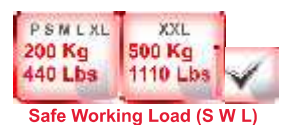
Patient Specific (SPU)



Surface Neutral

The Fortrend Material is very strong and robust.

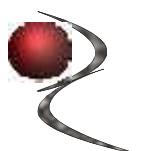
- Very strong and robust
- High Temperature/Drying Tolerance
- Commercial Laundry – Withstand Higher Washing and drying temperatures



Fullback
Lowback - Standard
Toileting
Walking
Sit 2 Stand
Hammock
Repositioning
Turning
Limb Support



Rhino Consultant and Facilitators Ltd
10 Gregston Trade Centre
Birmingham Road
Oldbury - B69 4EX UK



www.rhino-slings.com



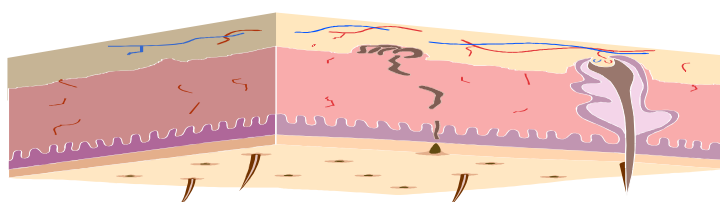
HIGH IMPACT

High Impact

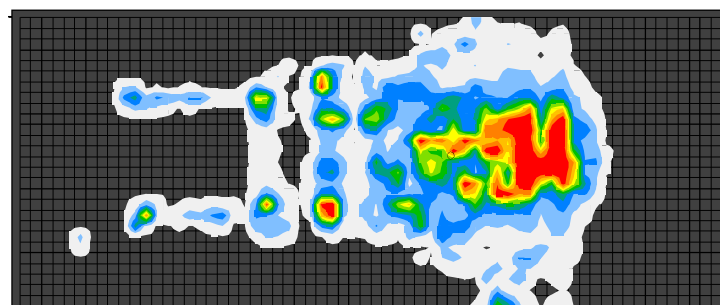


Composition

Blend of Polyester, Viscose, Nylon and Polyamide Fibres and Yarn



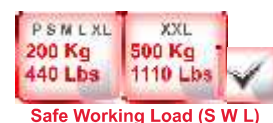
Patient Specific (SPU)



Surface Neutral

The High Impact Material offers exceptional product attributes including:

- Unique 4 Layer High Moisture-Wicking, Heat-Dispersing Material
- Soft, Comfortable and Kind to the skin
- Suitable for use with Patients with broken and/or damaged or sensitive skin



Hammock
Walking
Sit 2 Stand
Repositioning
Turning
Limb Support



Rhino Consultant and Facilitators Ltd
10 Gregston Trade Centre
Birmingham Road
Oldbury - B69 4EX UK



www.rhino-slings.com



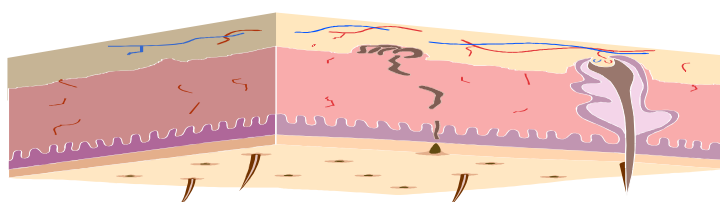
ENRICHED COTTON

Enriched Cotton

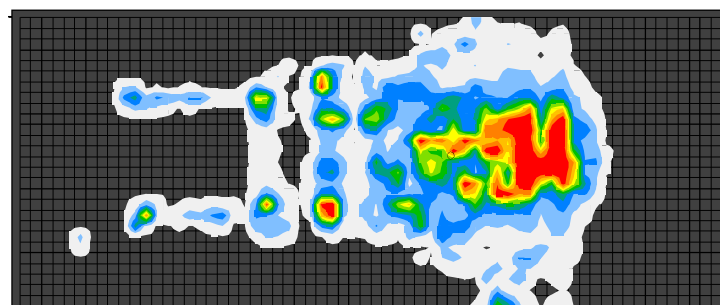


Composition

Blend of Polyester and Cotton Fibres and Yarn - High Cotton Content



Patient Specific (SPU)



Surface Neutral

The Enriched Cotton Material offers exceptional product attributes including:

- Soft and Comfortable - Clothing type feel
- Distribution and dispersion of the patient's weight over the entire sling.
- High Air Permeability
- High Moisture Absorption



Repositioning
Turning
Limb Support



Rhino Consultants and Facilitators Ltd
10 Grogan Trade Centre
Birmingham Road
Webster B69 4EX UK
Website: www.rhino-slings.com



www.rhino-slings.com